

# The **scape** gallery

Arni Magnusson

April 28, 2011

## Contents

<b>1</b>	<b>Overview</b>	<b>2</b>
<b>2</b>	<b>plotB</b>	<b>3</b>
<b>3</b>	<b>plotCA</b>	<b>4</b>
<b>4</b>	<b>plotCL</b>	<b>7</b>
<b>5</b>	<b>plotIndex</b>	<b>10</b>
<b>6</b>	<b>plotLA</b>	<b>12</b>
<b>7</b>	<b>plotN</b>	<b>14</b>
<b>8</b>	<b>plotSel</b>	<b>17</b>

**scape, n.** *A view of scenery of any kind, whether consisting of land, water, cloud, or anything else.*

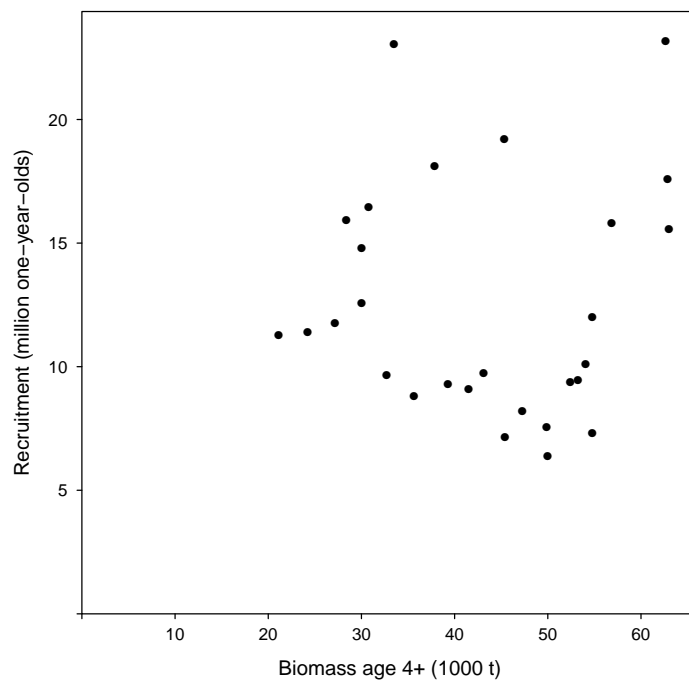
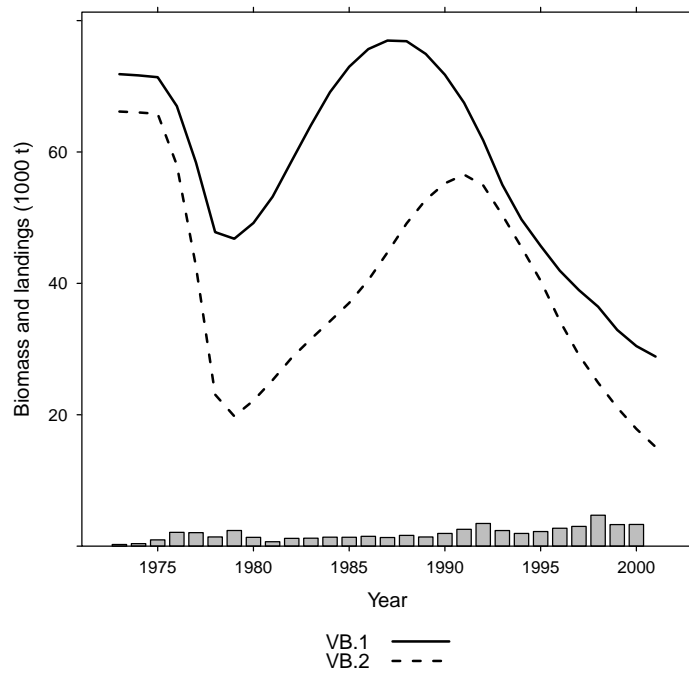
—Oxford English Dictionary

## 1 Overview

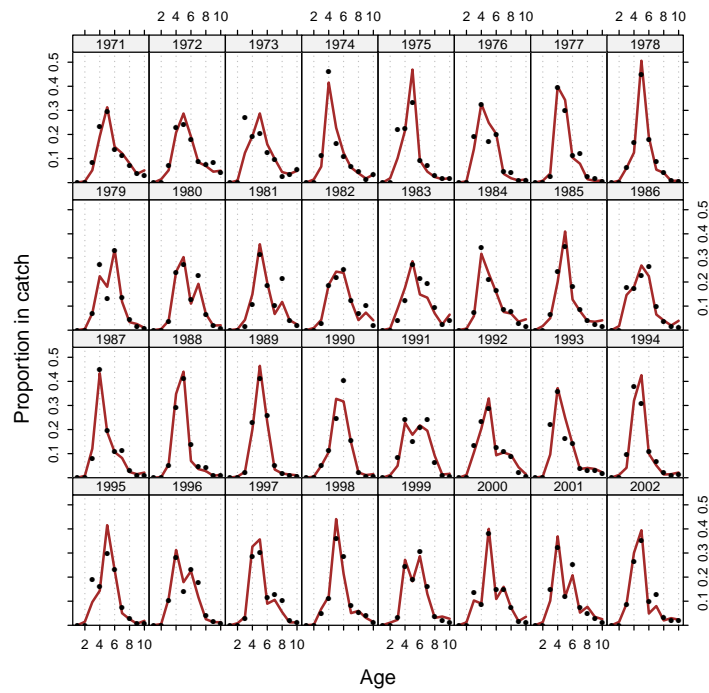
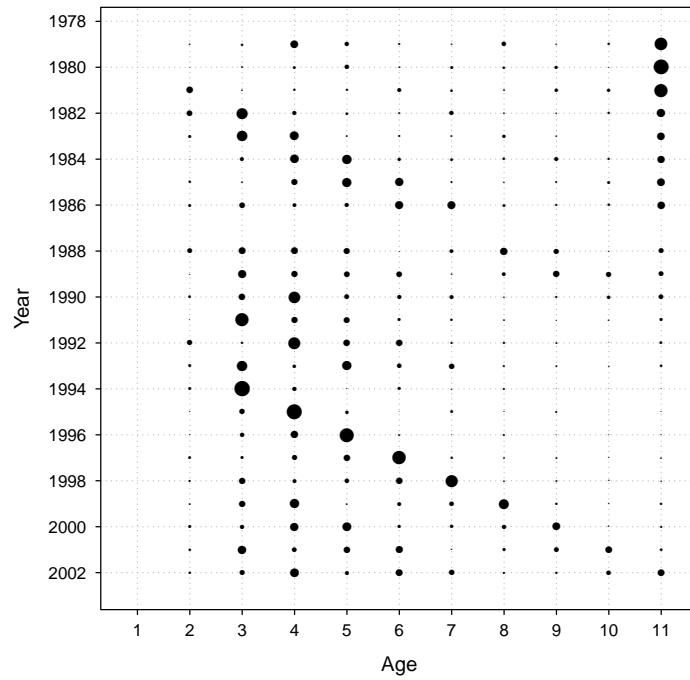
This vignette is only a series of plots, demonstrating how the **scape** plot examples look in a PDF document, as opposed to the default graphics device. Mainly intended for package maintenance.

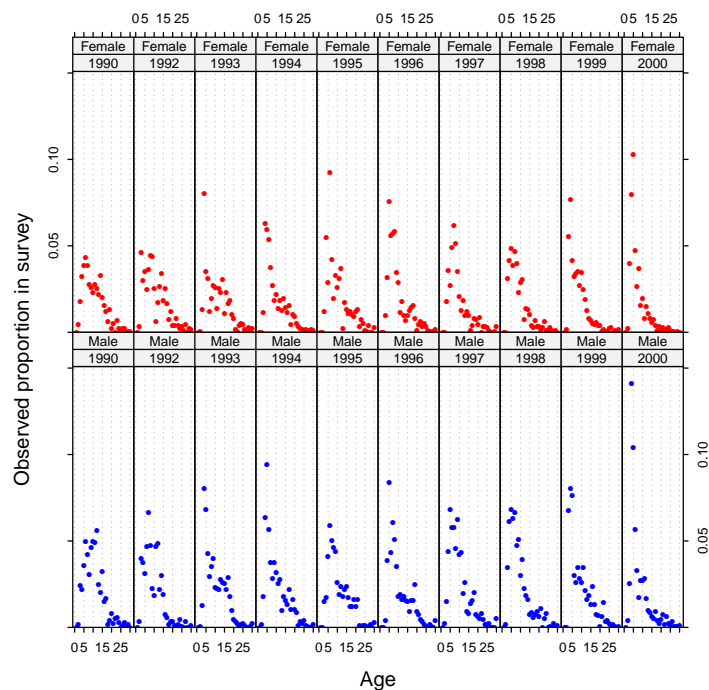
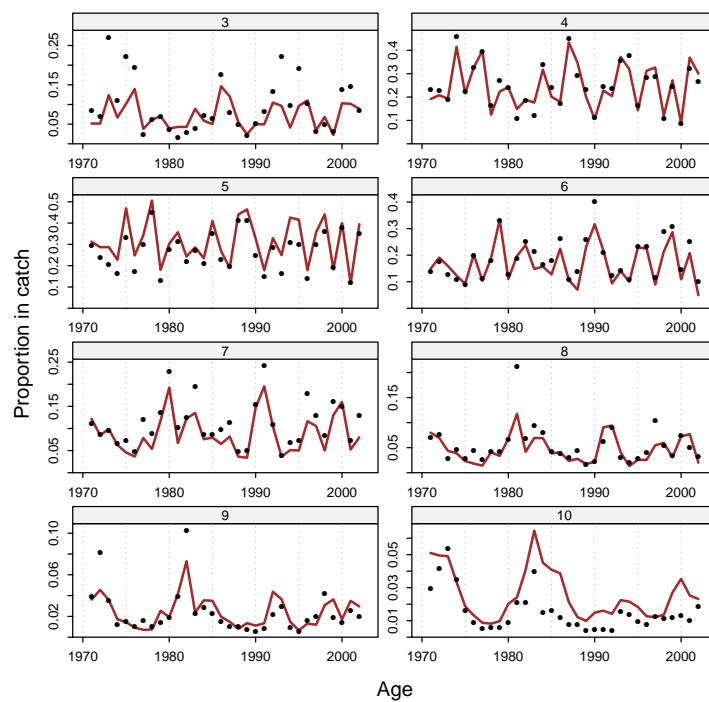
The general introduction to the **scape** and **scapeMCMC** packages is the vignette `R goes fishing`.

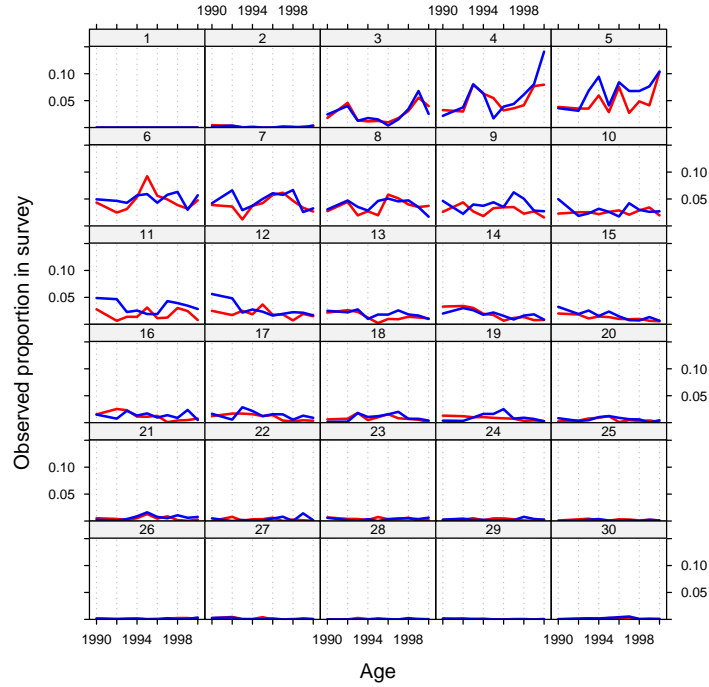
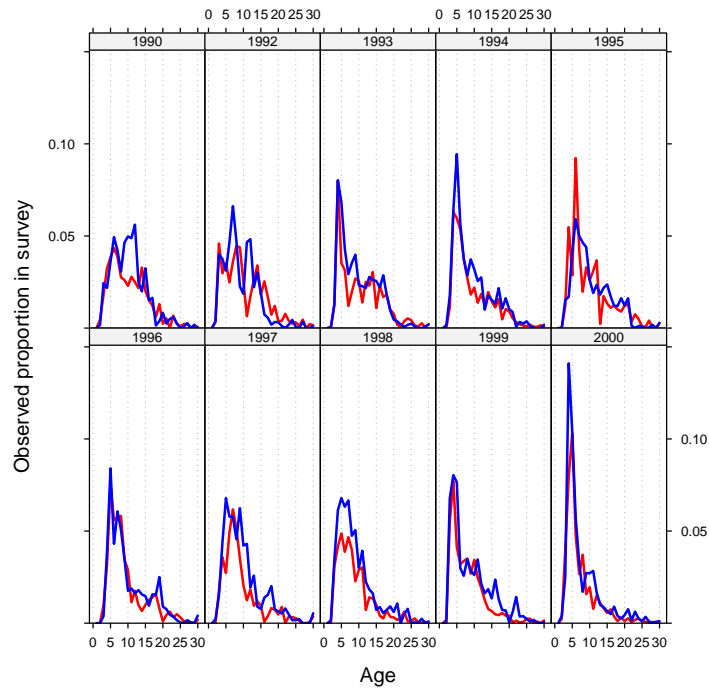
## 2 plotB



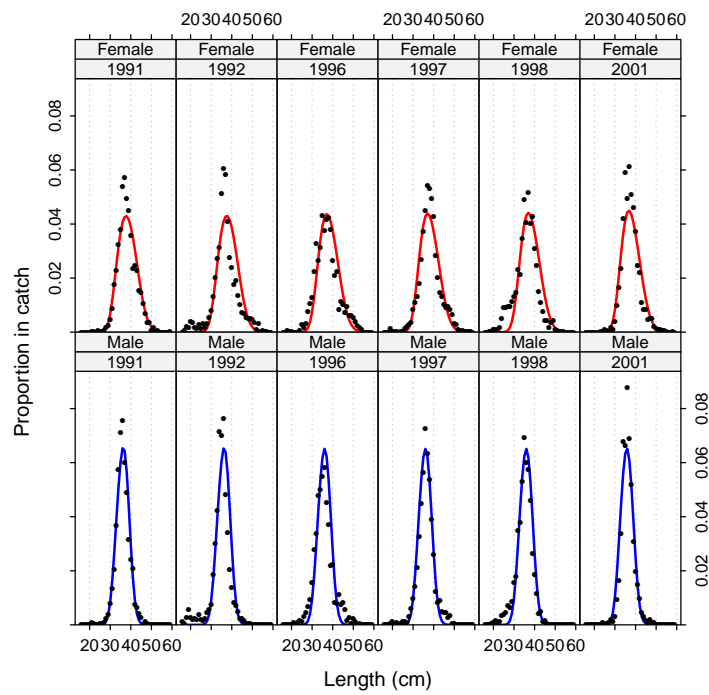
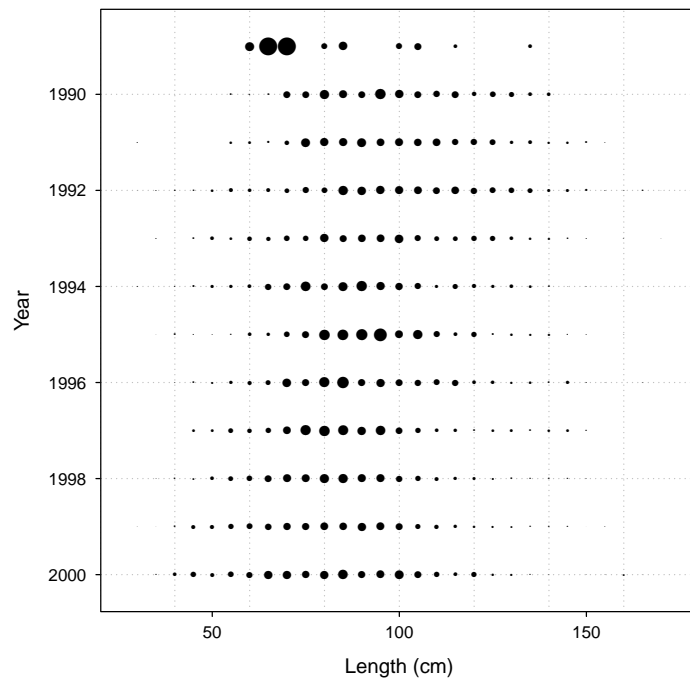
### 3 plotCA

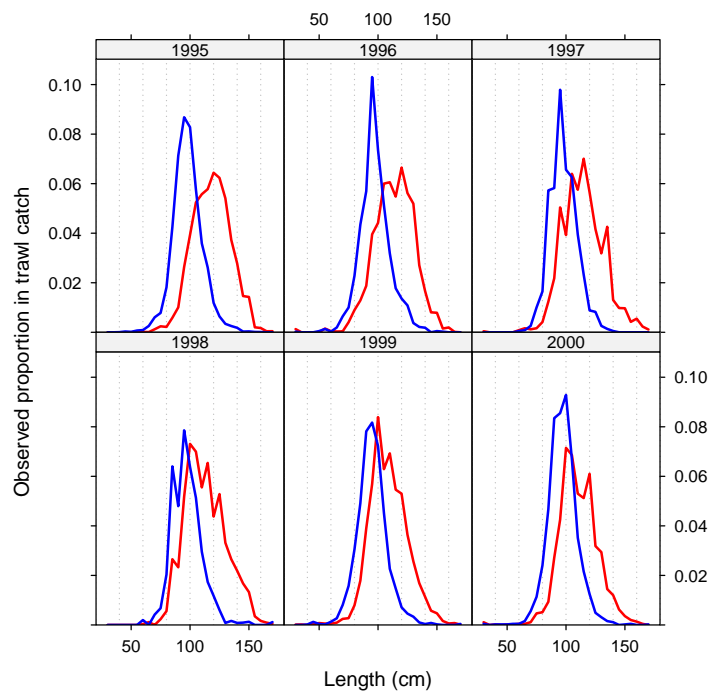
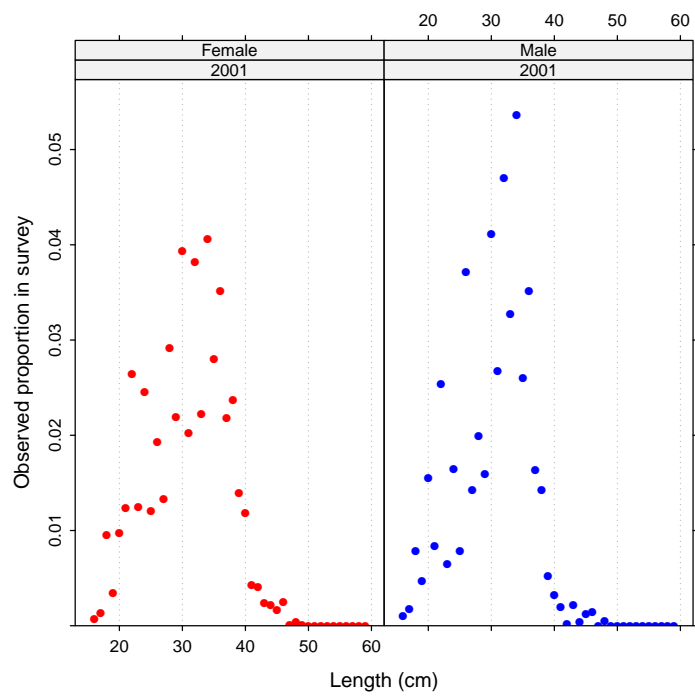




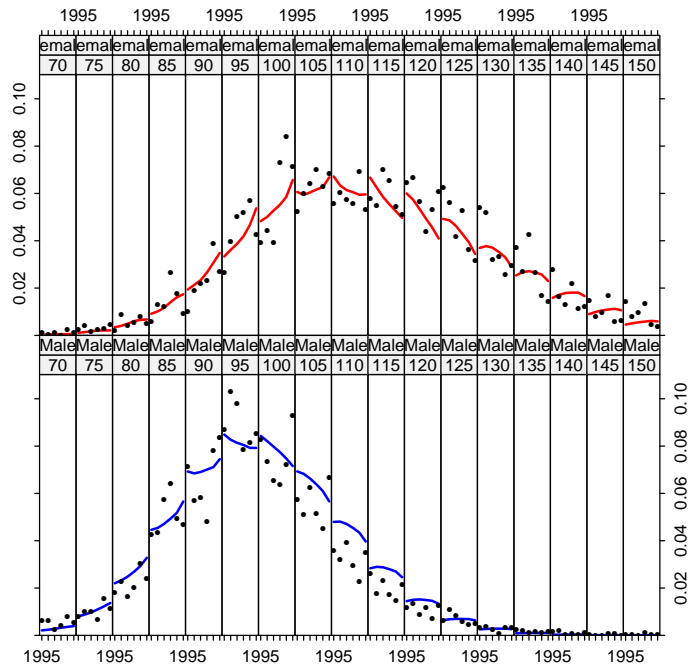


## 4 plotCL

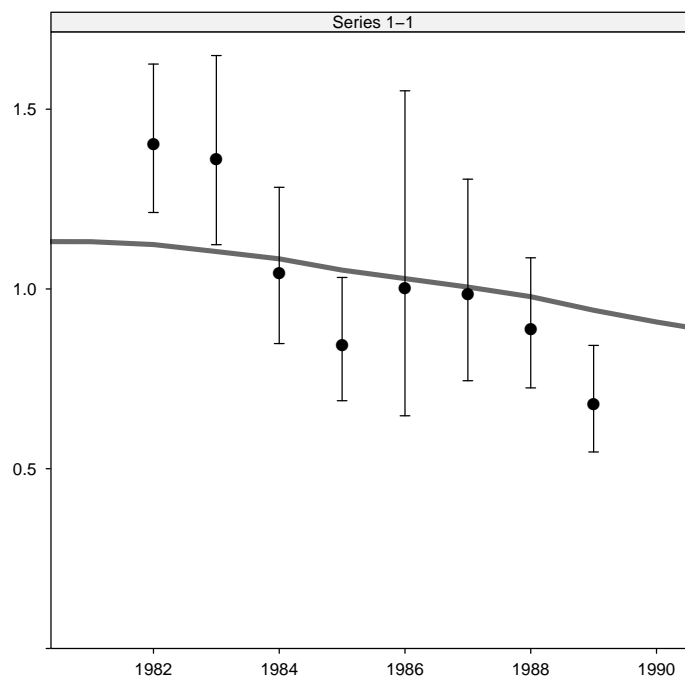
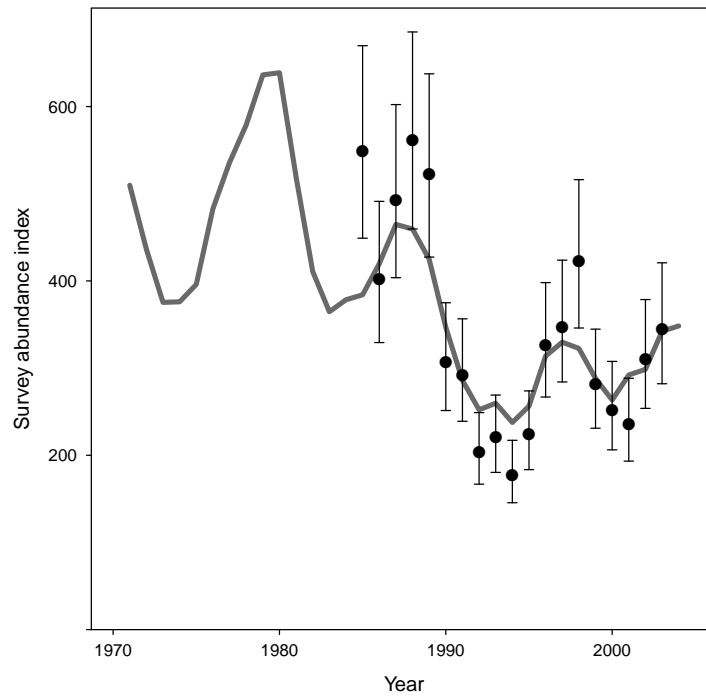


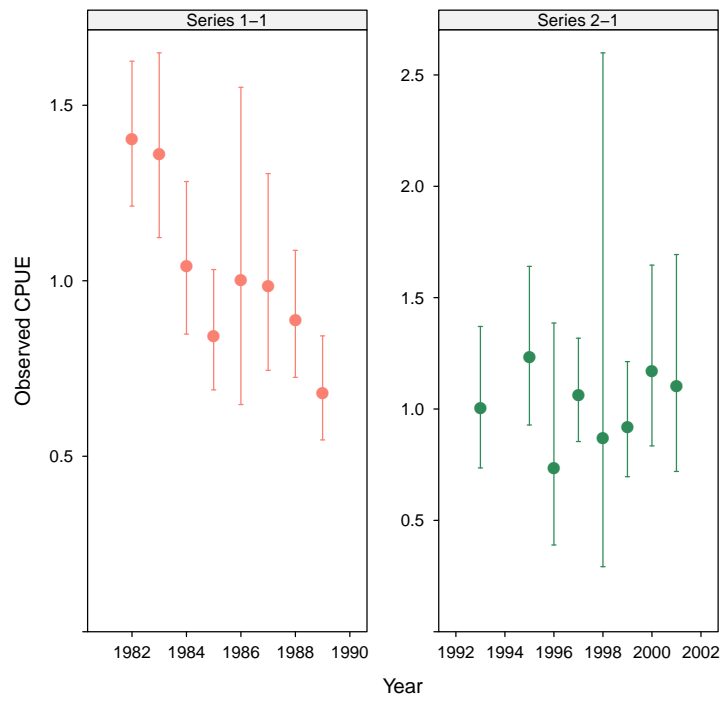




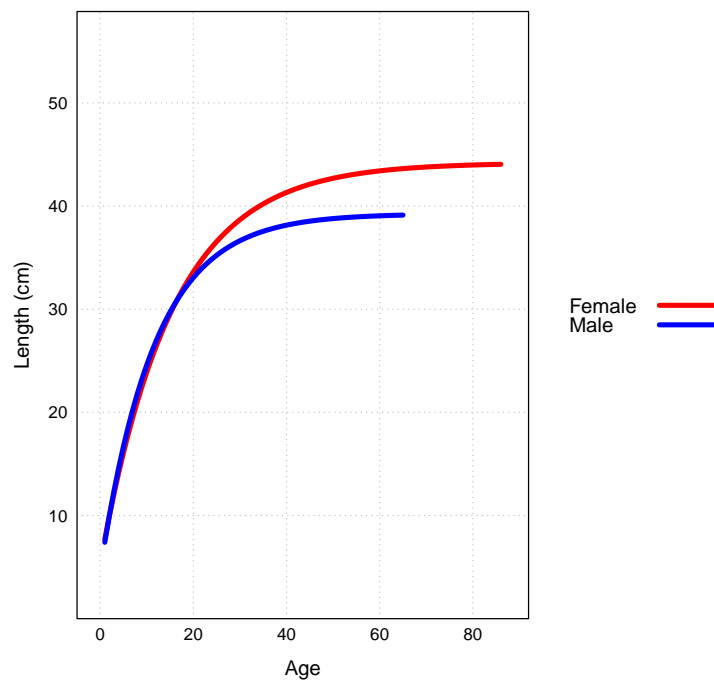
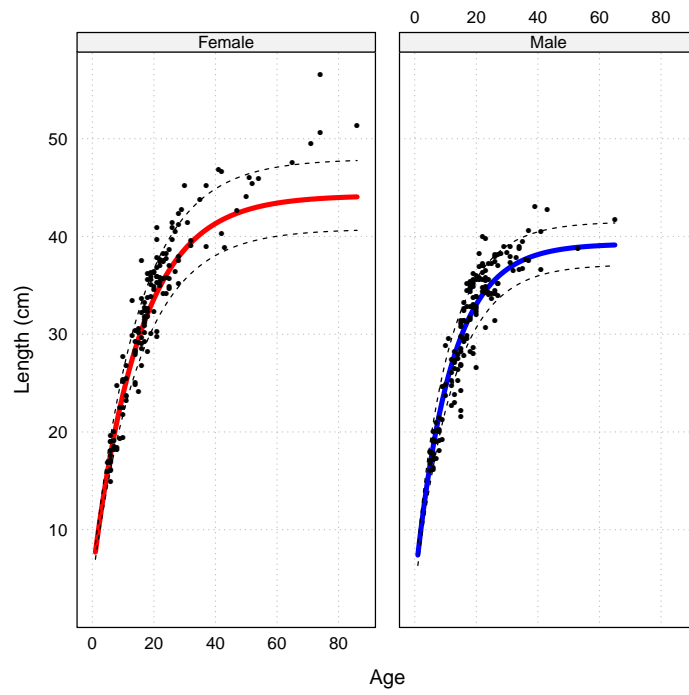


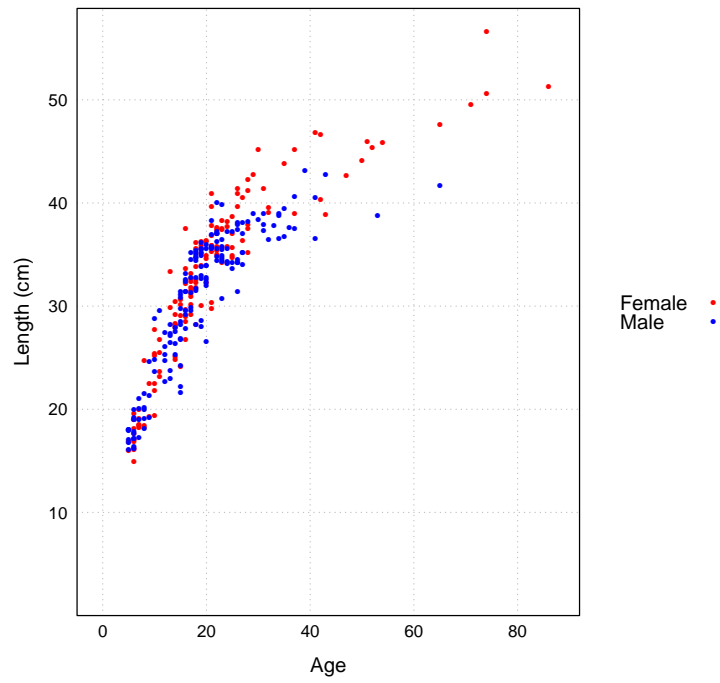
## 5 plotIndex



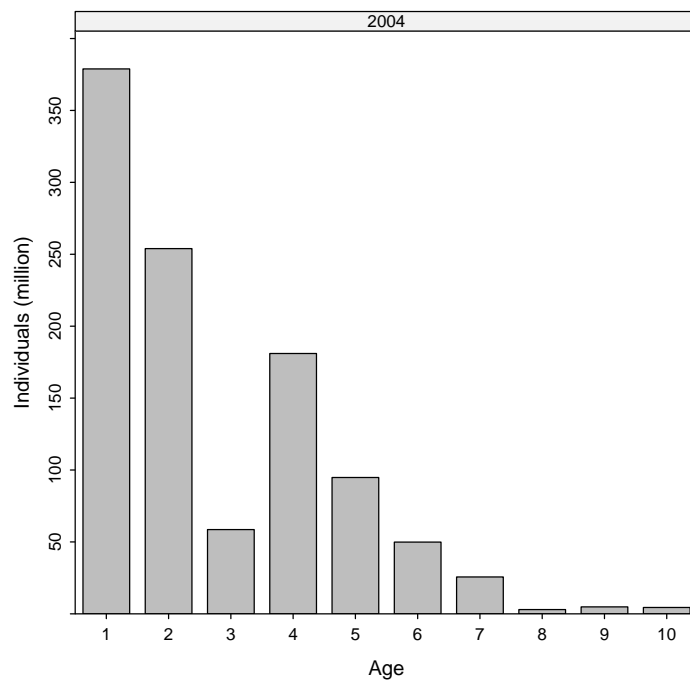
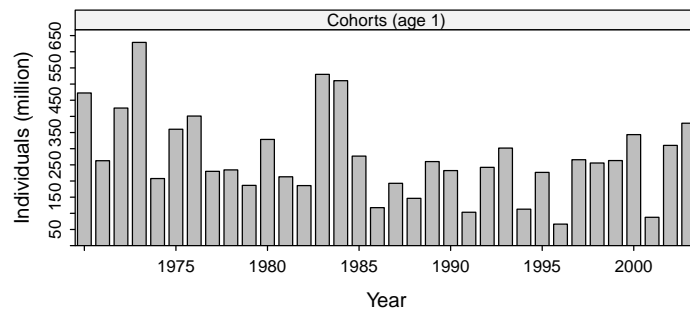
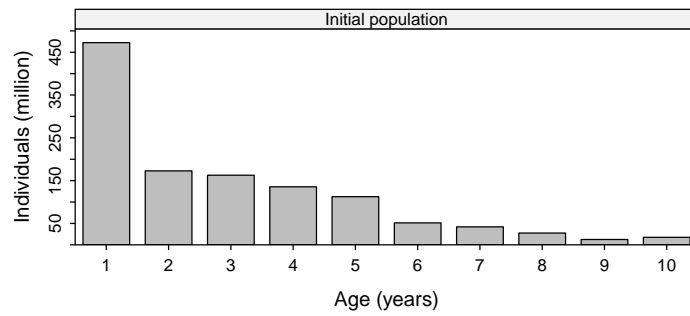


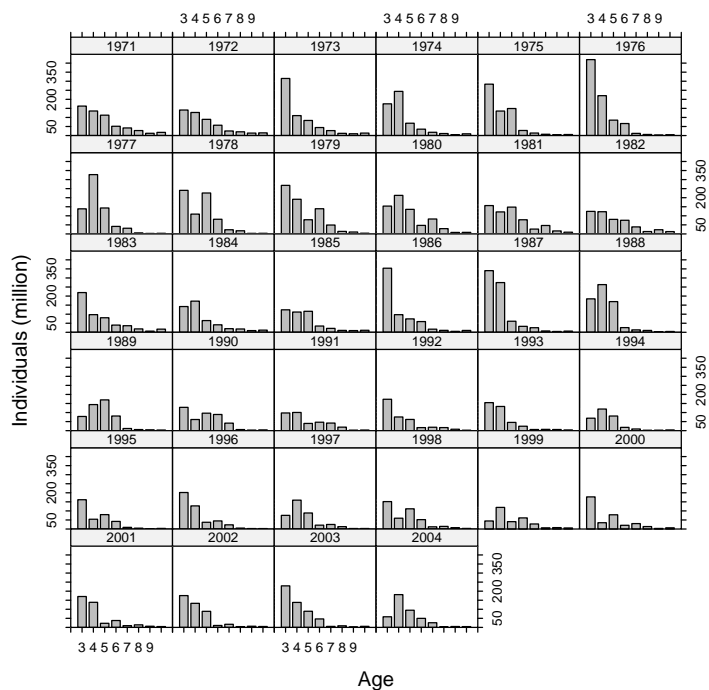
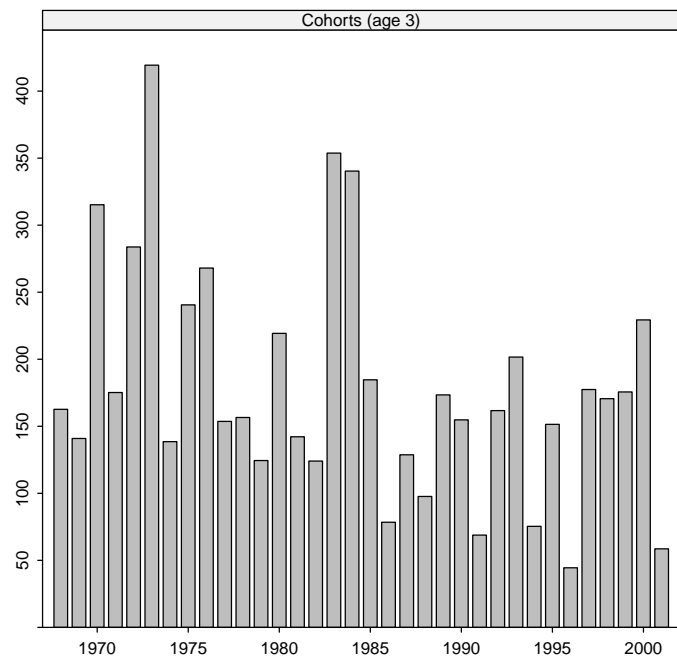
## 6 plotLA

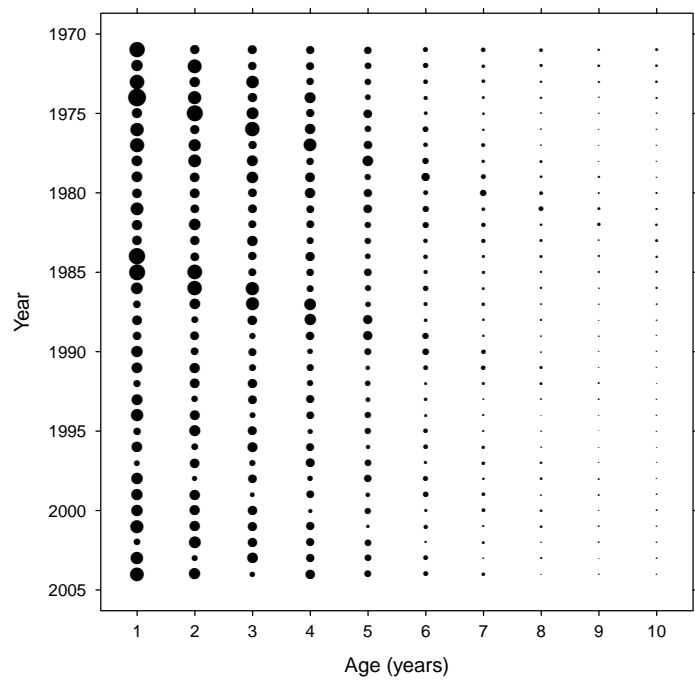




## 7 plotN









## 8 plotSel

